

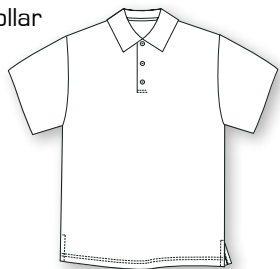
ESSENTIALS



SOLID LISLES AND 1 X 1 STRIPES

60's Two Ply Double Mercerized Cotton.

Knit Collar
Polo



B103	BLK	B103	WHT	103	LEM	109	ANT	109	MID
S M L XL XXL	S M L XL XXL	S M L XL XXL	S M L XL XXL	S M L XL XXL					

014210

109	ROY	109	SEA	109	LIL	109	PER	109	KIW	109	CAN
S M L XL XXL	S M L XL XXL	S M L XL XXL	S M L XL XXL	S M L XL XXL	S M L XL XXL	S M L XL XXL	S M L XL XXL				

014510

CLUB STRIPE

60's Two Ply Double Mercerized Cotton.

5501	ROY	5501	SEA	5501	TTM	5501	LIL	5501	PER	5501	KIW	5501	CAN
S M L XL XXL	S M L XL XXL	S M L XL XXL	S M L XL XXL	S M L XL XXL	S M L XL XXL	S M L XL XXL							

014510

JONES JACQUARD

60's Two Ply Double Mercerized Cotton.

5512	SEA	5512	PER	5512	LIL	5512	KIW	5512	CAN
S M L XL XXL	S M L XL XXL	S M L XL XXL	S M L XL XXL						

014910

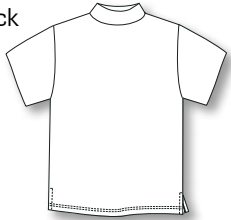
COLOR CODES

- ANT = Anthracite
- BLK = Black
- CAN = Cantaloupe
- KIW = Kiwi
- LEM = Lemon
- LIL = Lilac
- MID = Midnight
- PER = Periwinkle
- ROY = Royal
- SEA = Sea
- TTM = Titanium
- WHT = White

1x1 STRIPE MOCKS

60's Two Ply Double Mercerized Cotton.

Short Sleeve Mock



109MK MID

S	M	L	XL	XXL

109MK ROY

S	M	L	XL	XXL

109MK SEA

S	M	L	XL	XXL

109MK LIL

S	M	L	XL	XXL

109MK PER

S	M	L	XL	XXL

109MK KIW

S	M	L	XL	XXL

109MK CAN

S	M	L	XL	XXL

014310

COUNTRY CLUB OUTERWEAR

100% Cotton. Great warm weather weight. Diagonal pattern creates tonal color.

Quarter Zip Lined Vest



STYLE 4005

4005 ROY

S	M	L	XL	XXL

4005 SEA

S	M	L	XL	XXL

4005 PER

S	M	L	XL	XXL

4005 KIW

S	M	L	XL	XXL

4005 TTM

S	M	L	XL	XXL

01595010

Quarter Zip Pullover



STYLE 4003

4003 MID

S	M	L	XL	XXL

4003 SEA

S	M	L	XL	XXL

4003 PER

S	M	L	XL	XXL

4003 CHR

S	M	L	XL	XXL

4003 KIW

S	M	L	XL	XXL

016510

MERCERIZED PIMA COTTON VESTS AND SWEATERS

100% Fine Peruvian Pima Cotton. Mercerized. Fully fashioned.

V-Neck Vest



STYLE 5550

5550	BLK	5550	LIL	5550	PER	5550	TTM												
S	M	L	XL	XXL	S	M	L	XL	XXL	S	M	L	XL	XXL	S	M	L	XL	XXL
5550	MID	5550	ROY	5550	SEA	5550	LEM												
S	M	L	XL	XXL	S	M	L	XL	XXL	S	M	L	XL	XXL	S	M	L	XL	XXL
5550	KIW	5550	CAN																
S	M	L	XL	XXL	S	M	L	XL	XXL										

01575010

Quarter Zip Sweater



STYLE 5551

5551	BLK	5551	MID	5551	SEA	5551	PER												
S	M	L	XL	XXL	S	M	L	XL	XXL	S	M	L	XL	XXL	S	M	L	XL	XXL
5551	CAN	5551	STL																
S	M	L	XL	XXL	S	M	L	XL	XXL										

017510

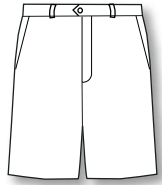
COLOR CODES

- BLK = Black
- CAN = Cantaloupe
- CHR = Charcoal
- KIW = Kiwi
- LEM = Lemon
- LIL = Lilac
- MID = Midnight
- PER = Periwinkle
- ROY = Royal
- SEA = Sea
- STL = Sterling
- TTM = Titanium

SEERSUCKER SHORTS

100% Cotton.

Palmer Short



flat front

5562

ROY



32	34	36	38	40	42

5562

PER



32	34	36	38	40	42

5562

TTM



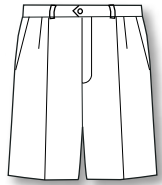
32	34	36	38	40	42

014510

COTTON SHORTS AND TROUSERS

Carnoustie shorts and trousers, whether flat front or pleated, feature the same expert tailoring employed in the making of our fine Italian wool dress slacks. Woven expressly for our Spring 2012 Collection.

Hagen Short



double reverse pleats

5563

STL



32	34	36	38	40	42

5567

TTM



32	34	36	38	40	42

5565

PTR



32	34	36	38	40	42

5486

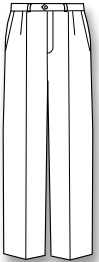
SND



32	34	36	38	40	42

014510

Hagen Trousers



double reverse pleats

5564

STL



32	34	36	38	40	42

5568

TTM



32	34	36	38	40	42

5566

PTR



32	34	36	38	40	42

5487

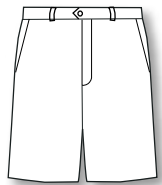
SND



32	34	36	38	40	42

016010

Palmer Short



flat front

5569

MID



32	34	36	38	40	42

5480

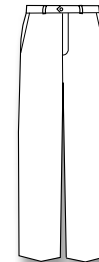
ANT



32	34	36	38	40	42

014510

Palmer Trousers



flat front

5570

MID



32	34	36	38	40	42

5481

ANT



32	34	36	38	40	42

016010

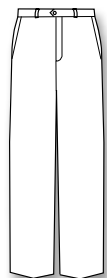
COLOR CODES

- ANT = Anthracite
- BIS = Biscuit
- BLK = Black
- CHR = Charcoal
- CIG = Cigar
- COF = Coffee
- GRA = Gray
- GRY = Gray
- IND = Indigo
- MID = Midnight
- NAV = Navy
- OYS = Oyster
- PER = Periwinkle
- PTR = Pewter
- ROY = Royal
- SIL = Silver
- SND = Sand
- STL = Sterling
- TAN = Tan
- TTM = Titanium

FINE SUPER 120'S ITALIAN WOOL TROUSERS

Carnoustie dress trousers feature only the finest fabrications Italy has to offer. Our craftsmanship includes a full split curtain dress make and too many other tailoring features to mention here. Always lightweight. Always impeccable.

Palmer Trousers



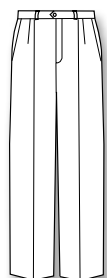
flat front

5560	CHR	5460	CHR	5269	PTR	4768	ANT	4662	BLK	4663	ANT
32 34 36 38 40 42		32 34 36 38 40 42		32 34 36 38 40 42		32 34 36 38 40 42		32 34 36 38 40 42		32 34 36 38 40 42	

*New for Spring 2012

0111010

Hagen Trousers



double reverse pleats

5561	MID	5462	SND	5461	IND	1117	BLK	1117	CHR	1117	SIL	1117	TAN
32 34 36 38 40 42		32 34 36 38 40 42		32 34 36 38 40 42		32 34 36 38 40 42		32 34 36 38 40 42		32 34 36 38 40 42		32 34 36 38 40 42	

*New for Spring 2012

5360	BIS	5260	OYS	5262	IND	4861	ANT	4963	GRY	4860	PTR	4661	SIL
32 34 36 38 40 42		32 34 36 38 40 42		32 34 36 38 40 42		32 34 36 38 40 42		32 34 36 38 40 42		32 34 36 38 40 42		32 34 36 38 40 42	

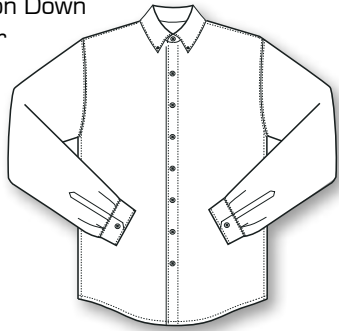
5261	CIG	4861	COF	4961	MID	4862	NAV	4665	ANT	4666	PTR	4960	GRA
32 34 36 38 40 42		32 34 36 38 40 42		32 34 36 38 40 42		32 34 36 38 40 42		32 34 36 38 40 42		32 34 36 38 40 42		32 34 36 38 40 42	

0111010

WOVENS

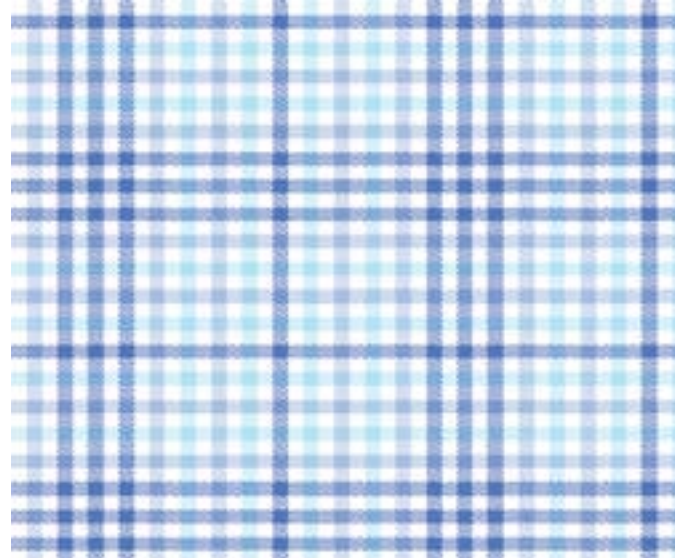
100's Two Ply Twill. Expertly tailored. Shell buttons. Woven expressly for our Spring 2012 Collection.

Button Down
Collar



5570

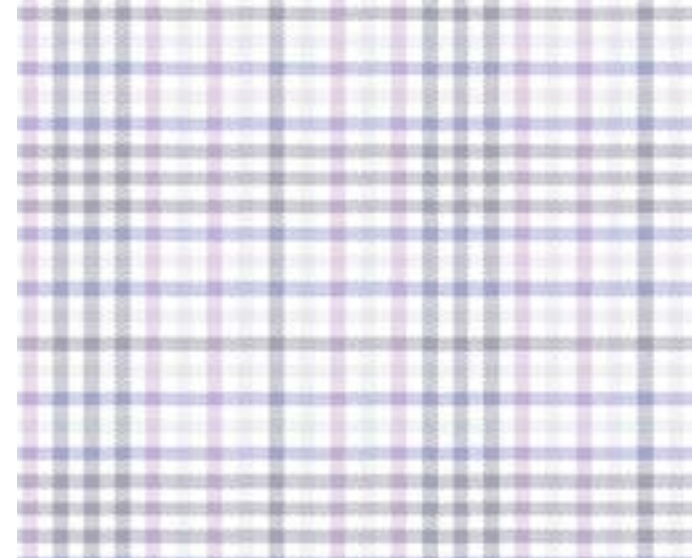
ROY



S	M	L	XL	XXL

5570

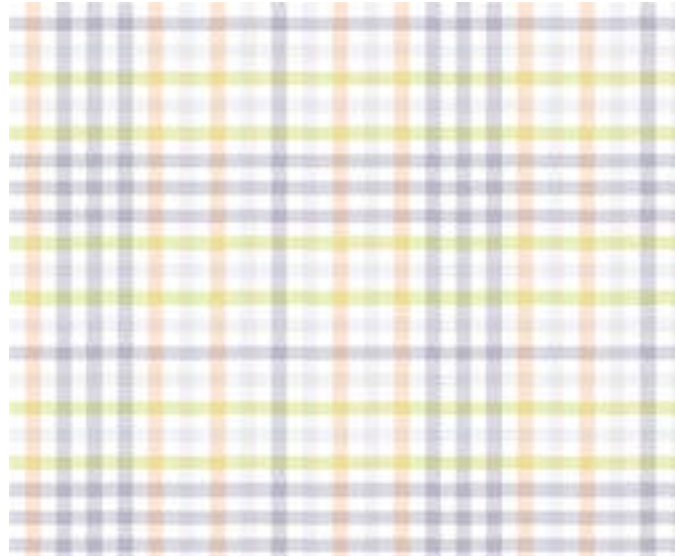
LIL



S	M	L	XL	XXL

5570

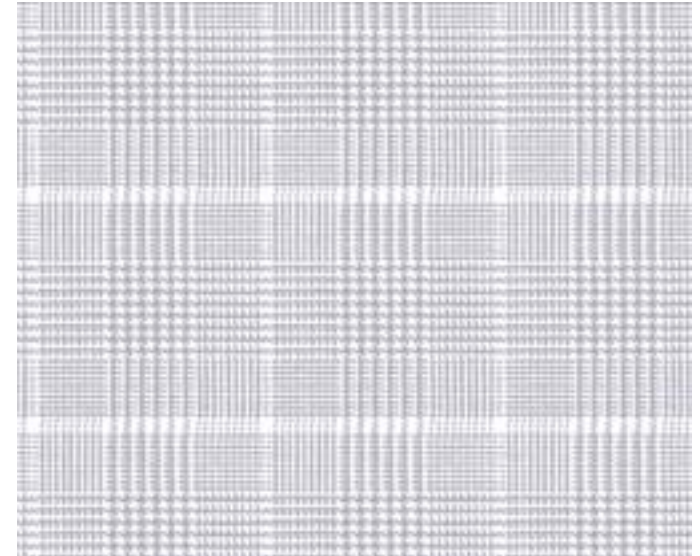
CAN



S	M	L	XL	XXL

5571

TTM



S	M	L	XL	XXL

COLOR CODES

- ANT = Anthracite
- BLK = Black
- CAN = Cantaloupe
- CHR = Charcoal
- IND = Indigo
- LIL = Lilac
- ROY = Royal
- SND = Sand
- TTM = Titanium

COTTON SUEDES

Luxurious Brushed Cotton Interlock. Prewashed and preshrunk.

Quarter Zip Lined Vest



STYLE 1011

1011	BLK	1011	CHR	1011	IND	1011	SND												
S	M	L	XL	XXL	S	M	L	XL	XXL	S	M	L	XL	XXL	S	M	L	XL	XXL

015510

Quarter Zip Pullover



STYLE 1001

1001	BLK	1001	CHR	1001	IND	1001	SND												
S	M	L	XL	XXL	S	M	L	XL	XXL	S	M	L	XL	XXL	S	M	L	XL	XXL

01625010

HOUNDSTOOTH COTTON SUEDE

Quarter Zip Lined Pullover



STYLE 3008L

3008L	ANT			
S	M	L	XL	XXL

017510

LONG SLEEVE MOCKS

60's Two Ply Double Mercerized Cotton.

Long Sleeve Mock



103LSMK	BLK	109LSMK	ANT						
S	M	L	XL	XXL	S	M	L	XL	XXL

014510 01485010