

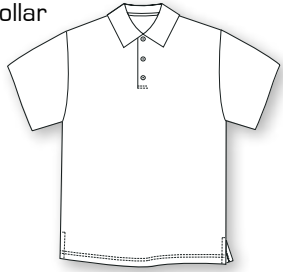
# DESERT COLLECTION



**SOLID LISLE AND 1 X 1 STRIPES**

60's Two Ply Double Mercerized Cotton.

Knit Collar  
Polo



B103 WHT

S	M	L	XL	XXL

014210

109 KIW

S	M	L	XL	XXL

109 CAN

S	M	L	XL	XXL

014510

**JERSEY STRIPES**

60's Two Ply Double Mercerized Cotton.

5501 KIW

S	M	L	XL	XXL

5501 CAN

S	M	L	XL	XXL

5501 TTM

S	M	L	XL	XXL

5503 TTM

S	M	L	XL	XXL

5505 TTM

S	M	L	XL	XXL

5506 KIW

S	M	L	XL	XXL

5507 WHT

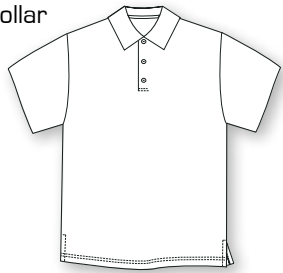
S	M	L	XL	XXL

014510

**JACQUARDS**

60's Two Ply Double Mercerized Cotton.

Knit Collar  
Polo



5512 KIW

S	M	L	XL	XXL

014910

5512 CAN

S	M	L	XL	XXL

014910

5514 KIW

S	M	L	XL	XXL

015110

5514 CAN

S	M	L	XL	XXL

015110

5515 CAN

S	M	L	XL	XXL

015110

5517 TTM

S	M	L	XL	XXL

014910

5518 TTM

S	M	L	XL	XXL

015110

5519 CAN

S	M	L	XL	XXL

015110

5520 TTM

S	M	L	XL	XXL

015110

5521 CAN

S	M	L	XL	XXL

015110

5521 KIW

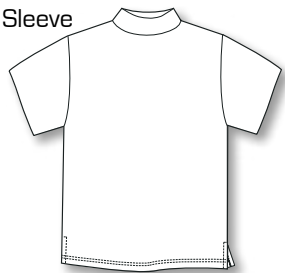
S	M	L	XL	XXL

015110

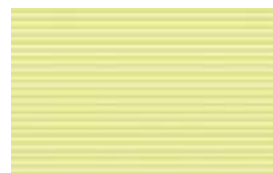
**1 X 1 STRIPE MOCKS**

60's Two Ply Double Mercerized Cotton.

Short Sleeve Mock

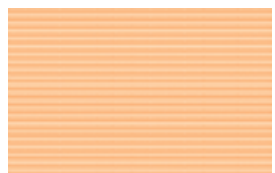


109MK KIW



S	M	L	XL	XXL

109MK CAN



S	M	L	XL	XXL

014310

**COLOR CODES**

- CAN = Cantaloupe
- CHR = Charcoal
- KIW = Kiwi
- TTM = Titanium
- WHT = White

**COUNTRY CLUB OUTERWEAR**

100% Cotton. Great warm weather weight. Diagonal pattern creates tonal color.

Quarter Zip Lined Vest



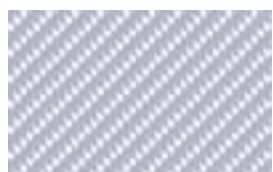
STYLE 4005

4005 KIW



S	M	L	XL	XXL

4005 TTM



S	M	L	XL	XXL

01595010

Quarter Zip Pullover



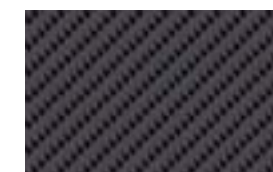
STYLE 4003

4003 KIW



S	M	L	XL	XXL

4003 CHR



S	M	L	XL	XXL

016510

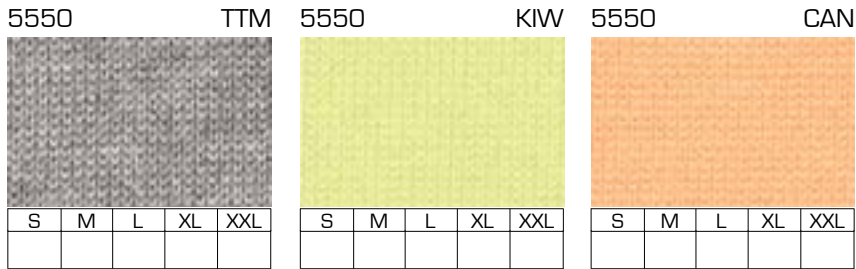
**MERCERIZED PIMA COTTON VESTS AND SWEATERS**

100% Fine Peruvian Pima Cotton. Mercerized. Fully fashioned.

V-Neck  
Vest



STYLE  
5550

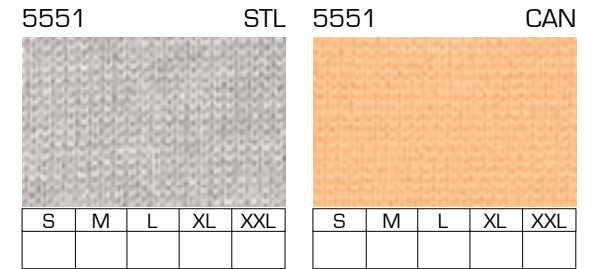


01575010

Quarter Zip  
Sweater



STYLE  
5551



017510

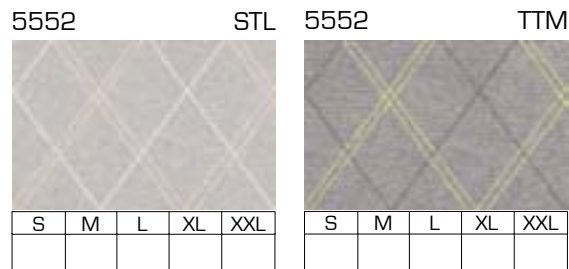
**ARGYLE VESTS AND SWEATERS**

100% Fine Peruvian Pima Cotton. Intricate intarsia detail.

V-Neck  
Vest



STYLE  
5552



01695010

V-Neck  
Sweater



STYLE  
5553



01825010

**WOVENS**

100's Two Ply Twill. Expertly tailored. Shell buttons.

Button Down  
Collar



5570

CAN



S	M	L	XL	XXL

5571

TTM



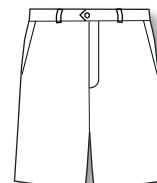
S	M	L	XL	XXL

015510

**SEERSUCKER SHORT**

100% Cotton.

Palmer  
Short



flat front

5562

TTM



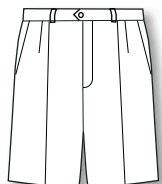
32	34	36	38	40	42

014510

**COTTON SHORTS AND TROUSERS**

Carnoustie shorts and trousers, whether flat front or pleated, feature the same expert tailoring employed in the making of our fine Italian wool dress slacks. Woven expressly for our Spring 2012 Collection

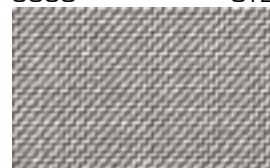
Hagen  
Short



double reverse  
pleats

5563

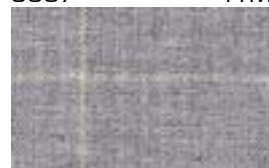
STL



32	34	36	38	40	42

5567

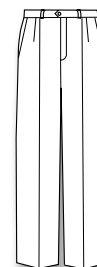
TTM



32	34	36	38	40	42

014510

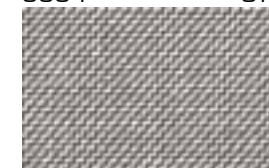
Hagen  
Trousers



double reverse  
pleats

5564

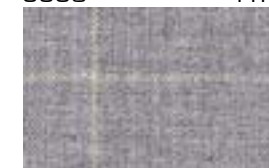
STL



32	34	36	38	40	42

5568

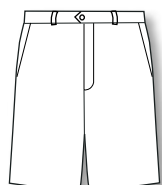
TTM



32	34	36	38	40	42

016010

Palmer  
Short



flat front

5480

ANT



32	34	36	38	40	42

014510

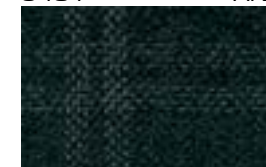
Palmer  
Trousers



flat front

5481

ANT



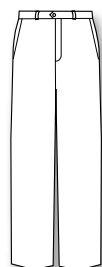
32	34	36	38	40	42

016010

**FINE SUPER 120'S ITALIAN WOOL TROUSER**

Carnoustie dress trousers feature only the finest fabrications Italy has to offer. Our craftsmanship includes a full split curtain dress make and too many other tailoring features to mention here. Always lightweight. Always impeccable.

Palmer  
Trousers



flat front

5560

CHR



32	34	36	38	40	42

0111010

**COLOR CODES**

- ANT = Anthracite
- CAN = Cantaloupe
- CHR = Charcoal
- KIW = Kiwi
- PTR = Pewter
- STL = Sterling
- TTM = Titanium